

## Monoclonal antibody against human PAI-1

Product No. ADG3723

### Description

The monoclonal antibody ADG3723 (clone HD-PAI-1 23.1) is a murine monoclonal antibody, subclass IgG<sub>2a</sub> recognizing the human Plasminogen Activator Inhibitor Type 1 (PAI-1). Mice were immunized with purified recombinant PAI-1, expressed in a prokaryotic expression system. The antibody has been purified from cell culture supernatant using Protein A affinity chromatography. The antibody reacts with both native and recombinant PAI-1

### Presentation

Screw capped vial containing 250 µg of purified antibody in PBS pH 7.4 + 0.01% ProClin300. The IgG concentration is given on the vial label. Spin the vial briefly before opening.

### Storage and Stability

Store the antibody at 2°-8°C. For long-term storage the antibody should be aliquoted and stored at -20°C or colder. It is recommended to avoid freeze-thaw cycles.

### Warnings and Precautions

**Contains:** Mixture of: 5-Chloro-2-methyl-4-isothiazolin-3-one and 2-Methyl-2H-isothiazol-3-one (3:1) and Modified alkyl carboxylate (ProClin® 300)

### Hazard pictograms



Warning

### Signal word

### Hazard statements

H317 - May cause an allergic skin reaction.

### Precautionary statements

- P280 - Wear protective gloves.
- P302 + P352 - IF ON SKIN: Wash with plenty of water.
- P333 + P313 - If skin irritation or rash occurs: Get medical advice/attention.
- P362 - Take off contaminated clothing and wash before reuse.
- P501 - Dispose of contents/container in accordance with local/regional/ national/international regulations.

### Specificity

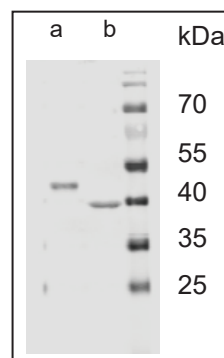
The antibody recognizes both active and inactive forms of PAI-1, and in addition it recognizes PAI-1 complexed with urokinase, tissue-type plasminogen activators, or vitronectin.

The antibody is specific for human PAI-1, no cross-reactivity was observed against other members of the plasminogen activator system (PAI-2, uPA, or tPA).

### Applications

#### Western Blot

The antibody is suitable for immunoblotting. It recognizes native (a) and recombinant (b) human PAI-1.



### Immunohistochemistry

The antibody can be used for immunohistological staining of formalin-fixed, paraffin-embedded tissue sections.

### References

Epitope Mapping of Monoclonal Antibodies Directed to PAI-1 Using PAI-1/PAI-2 Chimera and PAI-1-Derived Synthetic Peptides. Muehlenweg et al., Throm Res, 98 (2000) 73-81.

#### Hinweis/Note:

Der Packungsbeileger dient nur als erste Information. Der relevante Packungsbeileger liegt der Ware bei.

The datasheet is for information purposes only. The current datasheet will be enclosed with product shipment.

**Distributed by:**

**LOXO**  
GMBH  
IMMUNOLOGIE • MOLEKULARBIOLOGIE  
BIOCHEMIE • PRODUKTE UND SYSTEME

Gerhart-Hauptmann-Str. 48  
69221 Dossenheim  
Tel +49 6221 868023  
Fax +49 6221 8680255  
www.loxo.de - info@loxox.de

For research use only!

ADG3723©01092022